

VR725 Advanced Technology Logging and Archiving System



MISSION-CRITICAL RELIABILITY, MISSION-ENHANCING HARDWARE AND SOFTWARE

Eventide invented the digital communications recorder in 1989. With thousands of communications recorders currently in service in such diverse applications as NORAD, nuclear submarines, NASA, maximum security prisons, air traffic control, and 911 call centers throughout the world, Eventide continues its tradition of combining unmatched ease-of-use with mission-critical reliability. The purpose-built VR725 digital voice recorder offers unmatched ease-of-use with front panel operation, or with MediaWorks™, Eventide's full-featured Windows client. The VR725 mid-sized Eventide communications recorder, features an embedded Linux operating system for maximum reliability while maintaining seamless compatibility with your existing Windows infrastructure.

CONTROL FROM THE FRONT PANEL, ACCESS FROM THE NETWORK AND VICE VERSA!

Control the VR725 recorder from the optional front panel using the big, bright 7" color TFT touch screen, or simply plug in a monitor, keyboard and mouse. Monitor and play back right at the recorder! Using our full-featured MediaWorks client, up to 32 simultaneous users can recall, monitor, and play back at any Windows networked PC.

SCALABILITY AND FLEXIBILITY ARE ENGINEERED-IN

We know that your needs can change, so we have designed the VR725 to accommodate a wide variety of interfaces. Analog recording is expandable from 8 to 96 channels; digital PBX channels from 8 to 96; up to 48 ISDN BRI channels; 24 to 240 T1, E1 or ISDN PRI circuits, and 8 to 64 VoIP telephones. What's more, you can mix analog, digital PBX/telephone circuits and VoIP channels in the same unit. On/off-hook, VOX, and

continuous record activation are all selectable on a per-channel basis, as are beep tones and automatic gain control (AGC). The VR725 also supports DTMF and CLID telephone number detection. Compression rates of 13kbs GSM, ADPCM 16kbs, 32kbs, or Mu-Law 64kbs are selectable for each group of channels. Configuration is programmable - no tricky hardware adjustments necessary!

FAULT-TOLERANT ON-BOARD STORAGE FOR MONTHS (OR YEARS!)

Fully redundant RAID-1 dual mirrored 250GB hard drives are standard, yielding 41,250 channel hours of recording at 13.3kbs. Optional 400GB hard drives yield 66,000 channel hours. RAID-5 option provides up to 1.5TB of storage or over 28 channel-years of recording. For archiving, dual 9.4GB DVD-RAM multi-drives are standard which hold 1,540 channel hours of audio each and dual hot-swap power supplies are standard.

FEATURE-RICH PC CLIENT

The MediaWorks client provides access from an unlimited number of standard PC workstations running Windows, and up to 32 workstations can access the VR725 simultaneously. Multiple VR725s can be operational on a single network without interfering with your existing network or servers. MediaWorks and MediaAgent are self-installing and self-contained, scalable clients which have minimal system requirements, yet provides access to the call record database and recorder from an unlimited number of PC workstations.

COMPREHENSIVE USER FEATURES

All call records are stored in a state-of-the-art relational database. MediaWorks client search features include filtering by channel name, time/date, duration, dialed number, DTMF, Caller ID, call direction, ANI/ALI data or call tag. Up to all installed channels of playback or live

monitoring are available simultaneously via MediaWorks. You can create PC-compatible WAV files of single calls or all calls that comprise an incident.

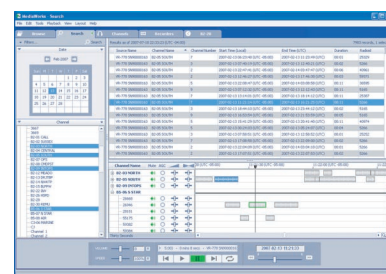
MULTIPLE USER ID/PASSWORD SECURITY

The system administrator can create multiple user profiles to allow permissions to be managed down to the channel level using password and user ID security.

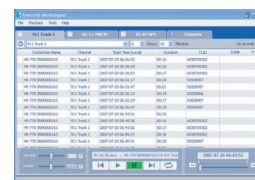
CHOOSE EVENTIDE

For over 36 years, Eventide has built a reputation for technological innovation and time-tested reliability. Thousands of customers worldwide have come to depend on Eventide for mission-critical operations.

For more information about the VR725, call Eventide at 201-641-1200 or visit WWW.EVENTIDE.COM



MediaWorks™ interface



MediaAgent™ interface

Eventide®

Communications Division
One Alsan Way Little Ferry, NJ 07643, USA
EVENTIDE.COM loggers@eventide.com
tel: 201.641.1200 fax: 201.641.1640

VR725 Advanced Technology Logging and Archiving System



FEATURES

NONPROPRIETARY RECORDING PLATFORM FEATURING EMBEDDED LINUX O/S FOR INCREASED RELIABILITY AND A MORE COST EFFECTIVE SYSTEM

TRUNKED RADIO, VOIP, T1, E1, ISDN, DIGITAL PBX SUPPORT

FIELD UPGRADABLE FROM 8 TO 96 CHANNELS

CHOICE OF ARCHIVE DRIVES AND METHODS

STANDARD DUAL 250GB RAID-1 HARD DRIVES, OPTIONAL 400GB HARD DRIVES, RAID-5, OR HOT-SWAP HARD DRIVE ARRAY

STANDARD DUAL HOT-SWAP POWER SUPPLIES

MIX ANALOG AND DIGITAL CHANNELS IN SAME SYSTEM

DIAL-IN REMOTE DIAGNOSTICS

VARIABLE SPEED PLAYBACK, FAST FORWARD/REWIND

INPUT CARDS DETECT DTMF AND CLID FOR INCLUSION INTO CALL RECORDS DATABASE

PROGRAMMABLE ARCHIVE PROTECTION PREVENTS PREVIOUSLY RECORDED MEDIA BEING RECORDED OVER OR REFORMATTED

SPECIFICATIONS

STANDARD LOCAL CONTROL

Monitor, keyboard, mouse, volume control with built-in speaker, drive status LEDs, re-record and headset jacks, key lock for power on/off

OPTIONAL FRONT PANEL

7" color touch screen, drive status LEDs, re-record and headset jacks, key lock for power on/off

REMOTE WINDOWS PROGRAMS

MediaWorks™, MediaAgent™, MediaCoach™

CHANNEL CAPACITY PER UNIT

Analog – 8 to 96
Digital Stations – 8 to 96
T1/E1/PRI – 1 to 8
VoIP – 8 to 64

ON-LINE RECORDING STORAGE

Standard dual mirrored 250GB RAID-1 yields 41,200 channel hours
Optional 400GB yields 66,000 channel hours, or RAID-5 yields 198,000 channel hours

SYSTEM PLATFORM

Digital nonproprietary recording appliance

OPERATING SYSTEM

Embedded Linux

ARCHIVE RECORDING

9.4GB DVD-RAM - 1,540 Hours,
USB drive for back up/restore,
Remote Recording - Any NAS, SAN

or ATLAS series recorder

Removable 250GB hard drives yield 41,200 channel hours

CALL RECORD DATABASE

Relational database of all call records with programmable retention

PLAYBACK SEARCH PARAMETERS

Channel name, time/date, call duration, call direction, dialed number, caller ID number, call record filtering, channel number

PLAYBACK

Live monitor, simultaneous record/play, local speaker, remote PC, continuous, looped, variable speed, fast forward, and rewind

SECURITY

Multiple user profiles control permissions down to the channel level

CHANNEL INPUTS

Compression Rates:
13kbs GSM, ADPCM 16kbs, 32kbs or 64kbs Mu-law

Frequency Response:

200 to 3400Hz
Signal-to-Noise: -50dB
Crosstalk: -60dB

AGC: 24dB boost

Impedance: 10kOhm

Record Activation: VOX, off-hook, continuous, external

ANALOG INTERFACES

Analog telephone, 2-way radio, telephone trunks, stations, handsets, headsets, microphones, speakerphones, etc.
Beep Tone – selectable on a per-channel basis

DIGITAL INTERFACES

T1/E1/PCM30, ISDN PRI & BRI, VoIP telephones, trunked radio, digital telephone stations

NETWORK

Ethernet 10/100Mbps, TCP/IP protocol, Windows-based control client, up to 32 simultaneous accesses, with desktop Instant Recall

STANDARD FAULT-TOLERANT FEATURES

Dual hot-swap power supplies and fans, mirrored hard drives, dial-out alarm, dial-in remote diagnostics

DIMENSIONS

5.25" H x 19" W x 24" D,
Weight 55 pounds

Specifications subject to change without notice or obligation.

Eventide is a registered trademark; MediaWorks, MediaAgent, and MediaCoach are trademarks of Eventide Inc.

All other trademarks are the property of their respective owners.

©2007 Eventide Inc.

Eventide®

Communications Division
One Alsan Way Little Ferry, NJ 07643, USA
EVENTIDE.COM loggers@eventide.com
tel: 201.641.1200 fax: 201.641.1640